

OPERATION MANUAL

260mm Ultra Thin LED Pool Light



Please read this operation manual carefully and keep it for future reference



Safety Warnings

- Only a licensed or certificated electrician or a qualified serviceman is allowed to install or maintain this product
- Must be installed in accordance to the requirements of your government standard or local authorities
- Never handle it with wet hands and feet.
- This light is design for use only when fully submerged in water.
- Never operate this light for more than 30 seconds unless it is totally submerged in water.
- All lights are required to be disconnected from the main electricity before any operation of maintenance
- Maximum depth range for the light installation: 1~10 meter.
- Maximum water temperature range for the light: -20℃~35℃.

Section 1. Light Specification

Standard Input Voltage:

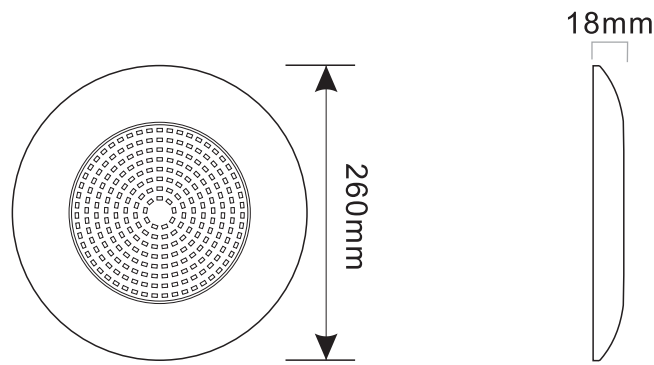
☐ AC12V

☐ AC24V

☐ DC12V

☐ DC24V

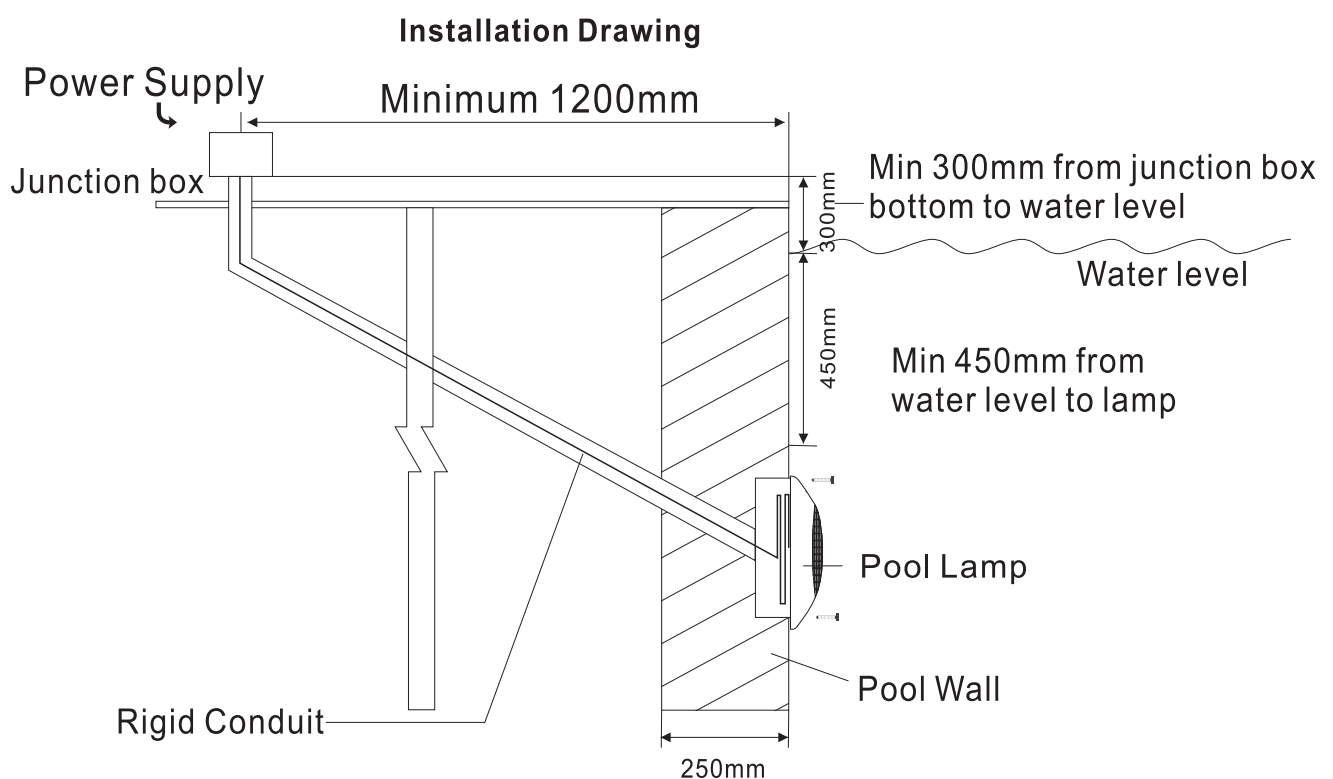
Dimensions : 260*18(mm)



Section 2. Installation

2.1 Preparing to install

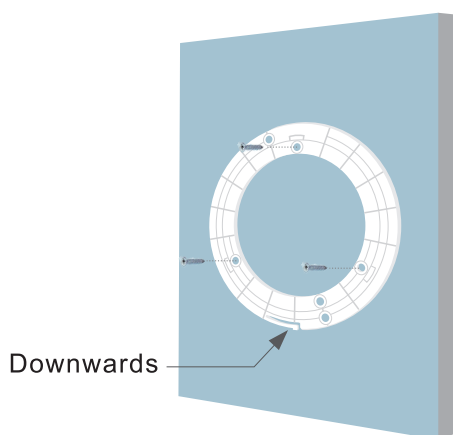
- Make sure the pool and its electrical system meets the requirements of the current national or local electrical codes and ordinances.
- This light can be installed in concrete pools.
- This light is designed to be used in new pools.
- or niche fixture that need replacement.
- Use only good quality stainless steel screws or screws provided along with the light.
- The light must be used or operated while fully submerged underwater only. Never switch on the light if it is not underwater.



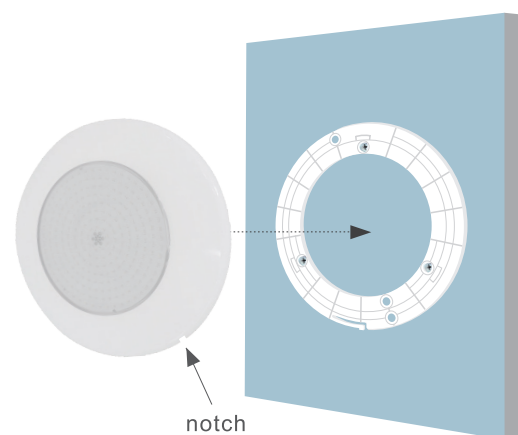
2.2 Installation Notes

- a. Make sure to install the bracket on a vertical wall of the pool.
- b. Make sure the top of the light should be at least 450mm below normal water surface.
- c. Reserve at least 150mm long backup wire wrapping on the back of the light, for the convenience of replacing.
- d. The junction box or the 12V low voltage transformer, should be located at least 300mm above the water surface, at least 200mm above the ground, and at least 1200mm from the edge of the pool.
- e. To achieve synchronization, make sure all the lights are installed correctly on model and characteristics as the one being replaced.

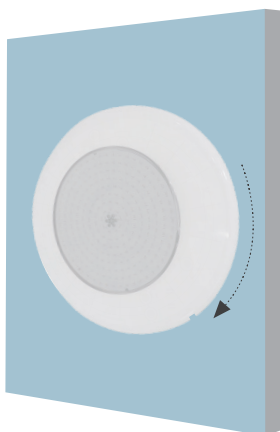
1 Wall mounted installation



Step 1: Fix the bracket



Step 2: Place the lamp close to the bracket

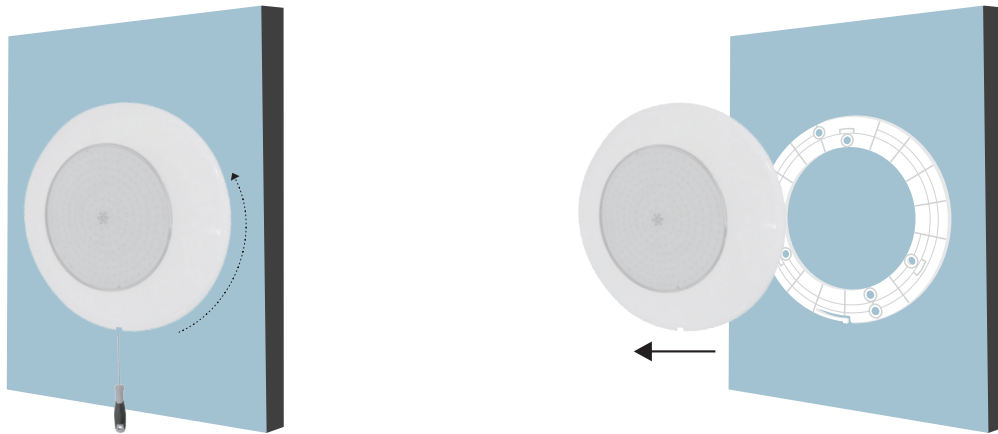


Step 3: Rotate the pool lamp clockwise



Step 4: When the notch on the lamp is facing downwards and the bracket can hold the lamp, it means installation successful

Method to uninstall the lamp



Use a small screwdriver to press the notch at the bottom of the lamp,
Simultaneously rotating the light counterclockwise

Section 3. Maintenance and Replacement

- a. There is no maintenance required for this light. It is designed to be used only once, meaning that replacement is necessary if it becomes defective. The repairing is impossible.
- b. Before servicing the light, always disconnect power at the circuit breaker to it. Make sure there is NO voltage supplied to the light.

To replace the light, unfasten it from the bracket. Make sure the new light is the same switch.

Section 4. Warranty

- The manufacturer warrants this led underwater light against defect in materials and workmanship for a period of two (2) years from the date of purchase.
- This warranty is limited to the first retail purchaser, it is not transferable, and does not apply to products that have been moved from their original installation sites. This warranty does not cover failures or malfunctions from improper installation and /or operation.
- The manufacturer is not responsible in any circumstances for assembly, installation or start-up of any electric components which have been inserted or handled at locations other than its own premises. The liability of the manufacturer shall not exceed the repair or replacement of defective parts.
- It specifically excludes liability for direct , incidental or consequential damages.