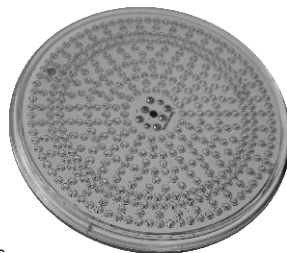


## E-Lumen Retrofit LED panel manual

Keep this manual for future reference

The manual is applicable to Retro-252, Retro-441 LED panel



### SAFETY WARNINGS

- Only qualified electrician is allowed to carry out the installation of this product.
- Avoid direct contact with electrical power.
- Respect all regulations in effect for preventing accidents.
- All units are required to be disconnected from the main electricity before any operation of maintenance.
- Never handle with wet hands and feet.
- This unit is design for use only when fully submerged in fresh water, connecting with a safety transformer.
- Never operate this Underwater Light for more than 1 minute unless it is totally submerged in water.
- Be sure power is off before installing or removing LED plate. Allow LED plate to cool before replacing.
- This product should be installed according to your local electrical installation ordinances and regulations.
- Maximum Depth for Light installation at 1 meter.
- Maximum Water Temperature Range for light operation 0 - 30°C.

### SPECIFICATION

A) Electrical Specification : 1) Voltage : AC12V 2) Frequency : 50/60Hz.

3) Power : 20W(Retro-252) / 35W(Retro-441)

B) Colour Options :

1	White	2	Green
3	Blue	4	Green+Blue
5	Red+Green	6	Red+Blue
7	Mode A: Blue+ Gradual Red	8	Mode B: Green+Gradual Red
9	Mode C: Blue+Gradual Green	10	Mode D: Blue+Gradual Red
11	Mode E: RGB Colour Sequence: Red>Green>Blue	12	Auto Colour Change
13	Mode F: Four Colour Sequence: Red>Green>Blue>Purple	14	Rapid Auto Colour Change

### Retro Light assembly

- 1) Push light cable through the silicone gel ring and connect wires and tighten screws. (Figure 1)
- 2) Position the silicone gel ring on the light and place bottom cover and tighten 5 screws. (Figure 2)
- 3) Place lanolin bottle in boiling water to dissolve to liquid and fill through 2 holes on cover plate (Figure 3)

- 4) When filled with Lanolin , tighten remaining 2 screws and leave to set whilst installing the retro bracket to the pool wall. When bracket installed fix the pool light to bracket. (Figure 4)

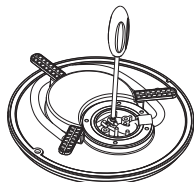


Figure 1

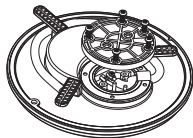


Figure 2

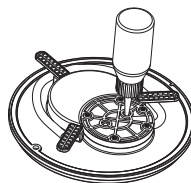
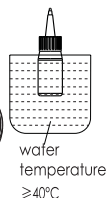


Figure 3



water temperature  
≥ 40°C

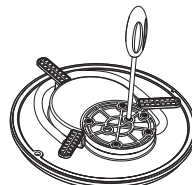


Figure 4

### Installation and Application

- 1) Ultrathin LED lamp panel of this specification can be matched with a variety of different surface cover and the shell.
- 2) The existing installation of PAR56 bulb lamp under water instead of on the market, only the original PAR56 bulb is removed, the ultra-thin LED lamp disc attached to the face on the cover with the 6 positioning block is fixed, and then loaded on the bottom shell by screws (Figure 5).
- 3) the above mentioned ultra-thin LED lamp plate with circular hanging wall lamp and PAR56 lamp, only E-Lumen and EL-NP300 water EMAUX company under the lights, such as the need of the thin LED lamp panel with other brands of underwater lamp, please cooperate between the lamp and the idea of underwater lamp.

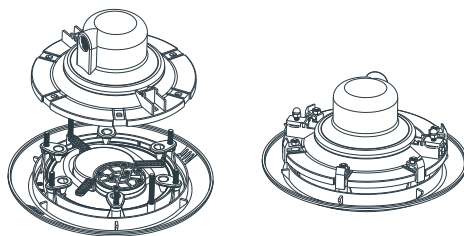


Figure 5

### Maintenance of the Lights

- 1) Do not leave the lights "on" above water for longer than 1 minute.
- 2) Do not leave the lights directly under sunlight. Fill the pool with fresh water as soon as possible after the lights are installed.
- 3) Before switching on the lights, check whether the lights are fully submerged underwater and the circuit boxes are running properly.
- 4) This unit does not need any kind of maintenance. If it is not working properly, please contact EMAUX authorized dealer where you purchase the unit from.
- 5) Warranty will be voided if the Emaux Underwater Light was dismantled by unauthorized personnel.