

6.1. - EXCEPTIONS THAT MAY RESULT IN DENIAL OF A WARRANTY CLAIM:

- 1.- Damage caused by careless handling, improper repackaging or shipping.
- 2.- Damage due to misapplication, misuse, abuse or failure to operate and install the equipment as specified in this manual.
- 3.- Damage caused by a misuse, abuse or failure to operate and install the equipment out of the scope of a professional level demanded in similar equipment or installation type.
- 4.- Damage due to unauthorized product modifications or failure to use Emaux original replacement parts.
- 5.- Damaged caused by negligence or failure to properly maintain products as specified in this manual.
- 6.- Damage caused by failure to maintain water chemistry in conformity with the standards of the swimming pool industry for any length of time.
- 7.- Damage caused by water freezing inside the product.
- 8.- Accident damage, fire or other circumstances outside the control of Emaux.
- 9.- Items had been repaired or altered in any way by any person that is not authorized by Emaux.
- 10.- Wear & tear parts.

6.2.- CLAIM PROCESS:

Summary of Emaux Claim Process in 3 steps:

- a) Claim: Customer contacts Emaux salesperson and provides completed details of the claim which includes:
 - a. Information about the failed product such as the part number(s) and serial number(s).
 - b. Description of the complaint/failure.
 - c. Pictures
- b) Once the complaint is received, the product quality incident will then be reviewed by Emaux's Quality Control Department following the "Emaux Warranty Policy".
- c) Conclusion: After the investigation is completed, Emaux will inform the distributor accordingly.

6.3. - WARRANTY OBLIGATION:

Emaux warrants any of above items from workmanship and/or material(s).

Should a defect become evident during the term of warranty, Emaux will, at its option, repair or replace such item or part at its own cost and expense. Customer will need to follow the warranty claim procedures from Emaux in order to obtain the benefit on this warranty.

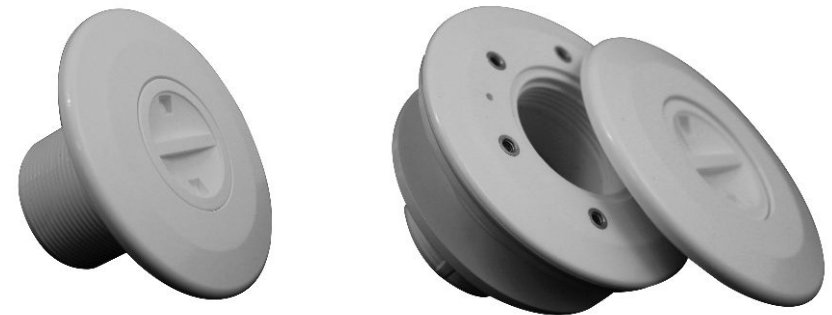
Emaux is not, however, responsible under this warranty for any cost of shipping or transportation of the equipment or parts thereof "to" or "from" our technical operations.

Emaux is not able to liable for any loss of time, inconvenience, incidental expenses such as labor cost, phone calls, legal cost or material cost incurred in connection with the replacement or removal of the equipment, or any other consequential or incidental damage on persons or assets. Emaux will be not responsible for any business profit loss operation stop due to the non-conformity product equipment. No indemnity or damages can be claimed on any account whatever.

6.4. - WARRANTY OR REPRESENTATIONS BY OTHERS:

No dealer or other person has authority to make any warranty or representation concerning Emaux or its products.

Accordingly, Emaux is not responsible for any such warranty or representation.



SUCTION NOZZLES

MANUAL INSTALLATION.

MODELS:

EM2831(A) / EM2831(E)
EM2836(A) / EM2836(E)

SUCTION NOZZLES

Model: EM2831; EM2836

Codes: 88130812; 88130912

IMPORTANT: This instruction manual includes essential information on the safety measures to be implemented for installation and start-up. Therefore, the installer as well as the user must read the instructions before starting installation and start-up. Keep this manual for future reference.

1.- SUCTION NOZZLE:

The purpose of the suction nozzles is to connect the suction pool cleaner with the pool suction circuit, so the pool cleaner will work as a vacuum.

2.- INSTALLATION:

In skimmers pool system, they can be placed in the same wall as the skimmers and use their suction pipes.

In those pools with overflow channel, we recommend to install the suction nozzles together with the wall conduits **EM2841** (for Concrete pools) or **EM2842** (for Vinyl or Liner pools). (Fig. 1).

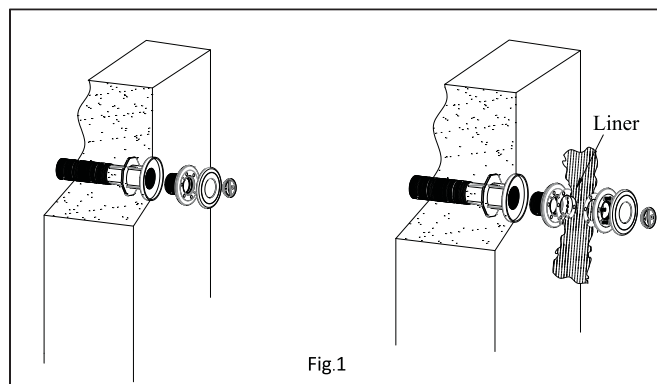


Fig.1

The suction nozzles can be assembled with threaded wall conduit 2" or assembly the connections Ø. 50 mm with PVC glue.

3.- MODELS:

		Concrete Pools	Concrete pools with liner or Vinyl Pools
		EM2831	EM2836
Metric connections	Pipe connections	Ø50 mm or 2"	Ø 50 mm or 2"
	Pool cleaner connection	1 ½"	1 ½"
Imperial connections	Pipe connections	Ø 1 ½" or 2"	Ø 1 ½" or 2"
	Pool cleaner connection	1 ½"	1 ½"

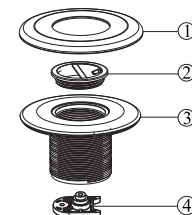
4.- OPERATING:

When proceed to use the pool cleaner, unscrew the cap and screw the pool cleaner male connector 1 ½" to the suction nozzle. Then connect the hose of the cleaning system to the connector. The inside diameter of the hose must be 38 mm.

5.- SPARE PARTS LIST:

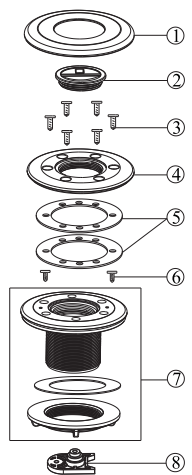
POS.	CODE	PRODUCT DESCRIPTION
1	01050184	face ring
2	01050194	Inlet cap
3	01050187	Body GB50
3	01050218	Body BS1.5"
4	01014172	Nut and Eyeball regulator

EM2831(A/E)



POS.	CODE	PRODUCT DESCRIPTION
1	01050184	Facering
2	01050194	Inlet cap
3	03012115	Screws M5x14
4	01050190	Ring
5	02010280	Liner gaskets
6	03012116	Screws M3.8x9.5
7	89130108	Body GB50
7	89130109	Body BS1.5"
8	01014172	Nut and Eyeball regulator

EM2836(A/E)



6. - WARRANTY POLICY:

Emaux manufactures its products with the highest standard of workmanship, using the best materials available through state of the art process. Emaux proudly warrants its products as follows:

EXTENDED WARRANTY FOR SPECIFIC PRODUCTS (OFFERED FROM DATE OF INVOICE).	
Product	Warranty Period
Filters & Filter Systems	2 years
Pumps	1 year
Underwater Lights	1 year (bulbs 90 days)
Ladders	1 year
Control devices	1 year
Heat Pumps & Heat Exchangers	1 year
Salt Chlorinators & UV Systems	1 year (2 years for cell material)
Pool Fittings	1 year
Cleaning Equipment & All others	1 year