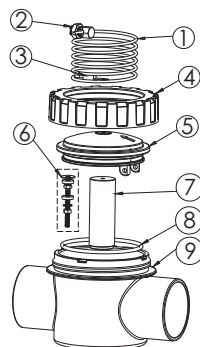


Part List

Item	Part No.	Description	Qty
1	112030012	Copper wire	1
2	112030011	Copper wire clamp	1
3	106391490	Terminal	1
4	570523486	Nut	1
5	570306906	Cover	1
6	112000025	Screw kit	1
7	112080001	Zinc alloy rod	1
8	111002375	O-ring	1
9	570383479	2" port valve housing (Metric)	1
	570384040	2" port valve housing (Imperial)	



Zinc Alloy Replacement

- Open the transparent cover and release the zinc alloy by clockwise rotation to take off it.
- Replace a new zinc alloy and tighten it by anti clockwise rotation.
- Make sure to secure and tighten the hex nut with transparent cover.
- Put it back to the body, lock inside the bottom holder and tighten the cover again.

