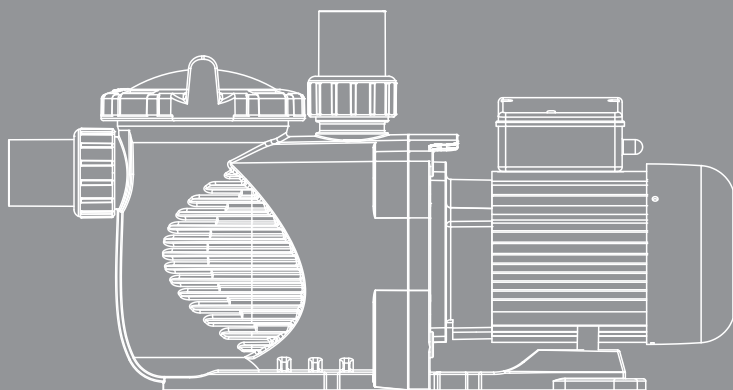




# SUPER-POWER

HIGH PERFORMANCE & HEAVY DUTY  
Swimming pool pump



## USER MANUAL



**RoHS**  
COMPLIANT  
2002/95/EC



**SAA**

**Model: SPH Series**

# TABLE OF CONTENT

PAGE	2	....	WARNINGS AND SAFETY INSTRUCTIONS
	4	....	1. SPH SERIES PUMP OVERVIEW
	4	....	2. PRODUCT INFORMATION
	5	....	3. IMPORTANT SAFETY INSTRUCTIONS
	6	....	4. INSTALLATION
			4.1 PIPING
			4.2 ELECTRICAL WIRING
	8	....	5. START UP
	9	....	6. ROUTINE MAINTENANCE
	9	....	7. WINTERIZING
	10	....	8. REPLACEMENT PARTS
	13	....	9. TROUBLE SHOOTING
	14	....	10. TERMS OF THE WARRANTY

## WARNINGS AND SAFETY INSTRUCTIONS

### GENERAL WARNING

This instruction contain general caution information for use in Pool and SPA pump installation application. Specified Pump model function should be refer to particular manual. Components such as the filtration system, pumps and heater must be positioned so as to prevent their being used as means of access to the pool by young children.



### RISK OF ELECTRICAL SHOCK

This appliance should be installed by qualified electrical personnel in accordance with National Electrical Code and all applicable local codes and ordinances. Hazardous voltage can shock, burn, and cause death or serious property damage. DO NOT use an extension cord to connect unit to electric supply to reduce the risk of electric shock.

1. The pump should be permanently connected to an individual circuit breaker.
2. Pump must be connected to a residual current device (RCD) having a rated residual operating current not exceeding 30 mA or receptacle with ground fault circuit interrupt (GCFI).
3. Electrical grounding must be connected before connecting to electrical power. Failure to ground all electrical equipment can cause serious or fatal electrical shock hazard.
4. Bonding: Use at least #8 AWG (#6 AWG for Canada) a solid copper conductor, run a continuous wire from external bonding lug (if available) to the pressure wire connector provided on the electrical equipment and to all metal parts of swimming pool, spa, or hot tub, and metal piping (except gas piping), and conduit within 1.5 m (5 ft) of inside walls of swimming pool, spa, or hot tub.
5. Never open the inside of the drive motor enclosure. There is a capacitor bank that holds a mains supply voltage charge even when there is no power to the unit. The voltage should be referred to the individual pump operation voltage.
6. The pump is capable of high flow rates; use caution when installing and programming to limit pumps performance only.
7. Switch OFF pump power before servicing and disconnecting the main circuit to the pump.
8. Never change the filter control valve position while the pump is running.



### COMPRESS AIR HAZARDOUS

This system enclosed pre-filter / filter and become pressurized. Pressurized air can cause the Lid to separate which can result in serious injury or death.

### STAND CLEAR OF PUMP DURING START-UP

Pool and spa circulation systems operate under high pressure. When any part of the circulating system (i.e. lock ring, pump, filter, valves, etc.) is serviced, air can enter the system and become pressurized. Filter tank Lid and pre-filter cover must be properly secured to prevent violent separation. Place pre-filter / filter air relief valve in the open position and wait for all pressure in the system to be relieved before remove the lib to access the basket for cleaning.



### HYPERTHERMIA

SPA water temperature excess 38°C (104°F) may be injurious to health. Measure water temperature before entering SPA.

Hyperthermia occurs when the internal temperature of the body reaches a level several degrees above the normal body temperature of 98.6 °F (37 °C). The symptoms of hyperthermia include drowsiness, lethargy, and an

increase in the internal temperature of the body.



## SUCTION ENTRAPMENT HAZARD

This pump produces high levels of suction and creates a strong vacuum at the main drain at the bottom of your pool and spa. This suction is so strong that it can trap adults or children under water if they come in close proximity to a pool or spa drain or a loose or broken drain cover or grate.

The Virginia Graeme Baker (VGB) Pool and Spa Safety Act creates new requirements for owners and operators of commercial swimming Pools and spas.

Commercial pools or spas constructed on or after December 19, 2008, shall utilize:

1. A multiple main drain system without isolation capability with suction outlet covers that meet ASME/ANSI A112.19.8a Suction Fittings for Use in Swimming Pools, Wading Pools, Spas, and Hot Tubs and either:
  - 1.1 A safety vacuum release system (SVRS) meeting ASME/ANSI A112.19.17 Manufactured Safety Vacuum Release systems (SVRS)  
For Residential and Commercial Swimming Pool, Spa, Hot Tub, and Wading Pool Suction Systems and/or ASTM F2387 Standard  
Specification for Manufactured Safety Vacuum Release Systems (SVRS) for Swimming pools, Spas and Hot Tubs or
  - 1.2 A properly designed and tested suction-limiting vent system or
  - 1.3 An automatic pump shut-off system.

Commercial pools and spas constructed prior to December 19, 2008, with a single submerged suction outlet shall use a suction outlet cover that meets ASME/ANSI A112.19.8a and either:

1. A SVRS meeting ASME/ANSI A112.19.17 and/or ASTM F2387, or
2. A properly designed and tested suction-limiting vent system, or
3. An automatic pump shut-off system, or
4. Disabled submerged outlets, or
5. Suction outlets shall be reconfigured into return inlets.

There are five types of suction entrapment according to The Virginia Graeme Baker (VGB) Pool and Spa Safety Act

1. **Body Entrapment** a section of the torso becomes entrapped
2. **Limb Entrapment** an arm or leg is caught by or pulled into an open drainpipe
3. **Hair Entrapment** or entanglement hair is pulled into and/or wrapped around the grate of the drain cover
4. **Mechanical Entrapment** the bather's jewelry or clothing gets caught in the drain or the grate
5. **Evisceration** the victim's buttocks come into contact with the pool suction outlet and he or she is disemboweled



## TO REDUCE ENTRAPMENT HAZARD RISK



### WARNING:

Two function suction outlets per pump must be installed to prevent entrapment. The minimum separate of suction on the same plate must be at least point to point measurement 1 meter (3ft) apart. It is used to avoid "dual blockage" by bather.

If suction is found damage, broken, cracked, missing or not securely attached during regular checking, shunt down the pool and replace it immediately.

A vacuum release or vent system is recommended to install for suction entrapment release.

# 1. SPH SERIES PUMP OVERVIEW

Super-Power Series Pump provides strong, reliable and outstanding for residential pool & SPA. Ring lock seal design eliminate suction leaks and maximize suction efficiency. The Super Power 2-speed pump allows the user to select a HIGH speed (2850rpm) or LOW speed (1450rpm) on the pump's control pad. The LOW speed feature will benefit to low power consumption, low noise level, and a longer lifespan of the product.



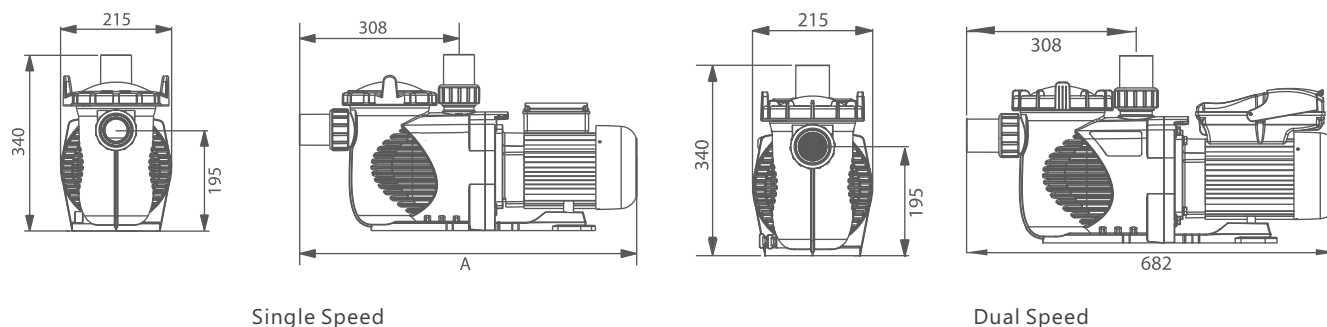
Speed Switch

# 2. PRODUCT INFORMATION

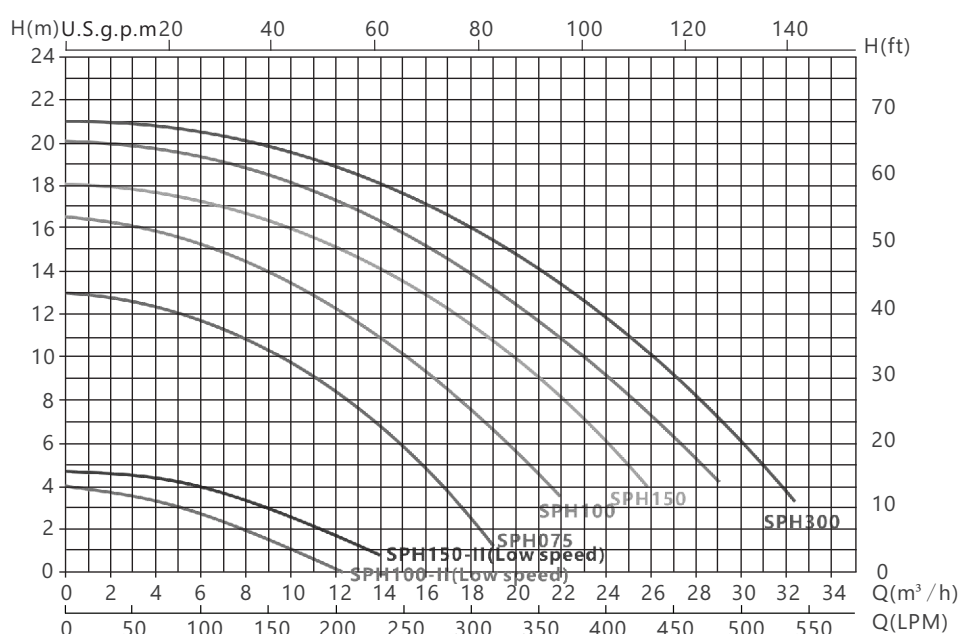
Model 50Hz	Input (kW)	Current (AMP)	Noise (dB)	Head(m)					
				6	8	10	12	14	16
				FlowRate(m <sup>3</sup> /h)					
SPH075	0.75	3.5	65	15	12.5	9.5	5	—	—
SPH100	1.10	5	65	19.5	17.5	15.2	12.5	9	3
SPH150	1.50	6.8	67	24	22	19.9	17.5	14	10
SPH200	1.80	8.2	67	27.5	25.5	23	21.7	18	14.5
SPH300	2.20	10	68	30	28.5	26	23.8	21	18
SPH100-II(HighSpeed)	1.10	5	65	19.5	17.5	15.2	12.5	9	3
SPH100-II(LowSpeed)	0.3	1.3	52	—	—	—	—	—	—
SPH150-II(HighSpeed)	1.50	6.8	65	24	22	19.9	17.5	14	10
SPH150-II(Low Speed)	0.35	1.5	52	—	—	—	—	—	—

Code 220V/50Hz	Code 220V/60Hz	Model	Connection Size	Horsepower	Weight (kg)	Capacitance 220V	A (mm)
88029604	88029704	SPH075	1.5"(50mm)ID / 2"(63mm)OD	0.75hp	13.6	20μF	652
88029605	88029705	SPH100	1.5"(50mm)ID / 2"(63mm)OD	1.0hp	13.8	25μF	652
88029607	88029707	SPH150	1.5"(50mm)ID / 2"(63mm)OD	1.5hp	14.0	25μF	652
88029608	88029708	SPH200	1.5"(50mm)ID / 2"(63mm)OD	2.0hp	14.2	30μF	652
88029609	88029709	SPH300	1.5"(50mm)ID / 2"(63mm)OD	3.0hp	14.5	35μF	682
9023212	—	SPH100-II	1.5"(50mm)ID / 2"(63mm)OD	1.0hp	14.7	—	682
9023213	—	SPH150-II	1.5"(50mm)ID / 2"(63mm)OD	1.5hp	15.0	—	682

## DIMENSIONS



## PERFORMANCE DATA



Remark: The performance curve above is for 50Hz models

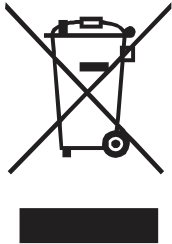
## 3. IMPORTANT SAFETY INSTRUCTIONS



### WARNING:

The user guide you are holding includes essential information on the safety measures to be implemented for installation and start-up. Therefore, the installer as well as the user must read the instructions before beginning installation and start-up. Keep this manual for future reference.

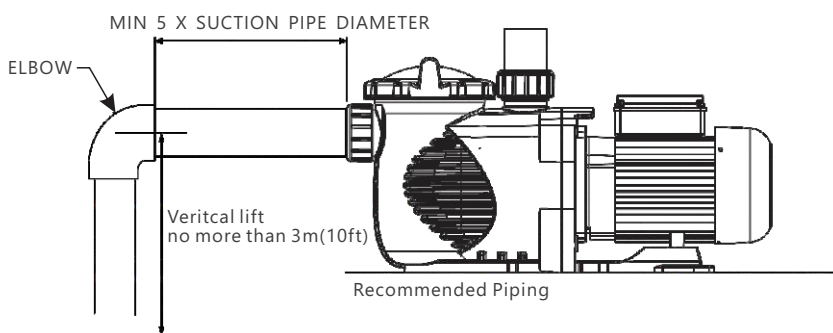
1. A protective device is to be installed in the fixed wiring.
2. This appliance can be used by children aged from 8 years and above and persons with reduced physical, sensory or mental capabilities or lack of experience and knowledge if they have been given supervision or instruction concerning use of the appliance in a safe way and understand the hazards involved. Children shall not play with the appliance. Cleaning and user maintenance shall not be made by children without supervision.
3. The appliance shall be installed in accordance with national wiring regulations means for disconnection must be incorporated in the fixed wiring in accordance with the wiring rules. A disconnected incorporated in the fixed wiring is to be provided.
4. The pump is to be supplied through a residual current device (RCD) or Ground Fault Circuit Interrupt (GFCI) having a rated residual operation current not exceeding 30mA.

	Correct disposal of this product
	<p>This symbol on the product, or in its packaging, indicates that this product may not be treated as household waste. Instead, it should be taken to the appropriate waste collection point for the recycling of electrical and electronic equipment. By ensuring this product is disposed of correctly, you will help prevent potential negative consequences for the environment and human health, which could otherwise be caused by the inappropriate waste handling of this product. For more detailed information about the recycling of this product, please contact your local council, your household waste disposal service, or the shop where you purchased the product.</p>

## 4. INSTALLATION

### 4.1 PIPING

1. Install the pump as close to the pool as possible, preferably in a dry, well ventilated area away from direct sun light. Protect the pump from excessive moisture.
2. Place the pump as close to the water source as possible, so that the suction pipe is short, straight and direct to reduce the friction loss. Don't install the pump at more than 10ft (3meters) of geo metric al height from water level. Pump priming time for 3m (10ft) should be at least 7 minutes at 2900 RPM.
3. Before installing the pump, make sure that the surface is solid, elevated, rigid and vibration free.
4. Secure the pump to the base with screws or bolts to limit the vibration and the stress on the pipe or the joints.
5. Leave enough space for gate valves in suction and discharge piping, if required.
6. Connect the suction and discharge pipe to the outlet and inlet of the swimming pool.
7. Make sure that floor drainage is adequate to prevent flooding.
8. Make sure that the pump and piping are accessible for servicing.



Note: The pump suction and discharge connections are mounded in thread stops, DON OT try to screw the pipe beyond these stops.

The two sets 2" union adaptor are universal design for metric and imperial PVC pipe connection.

4.2 ELECTRICAL WIRING



This power pump demand licensed or certified electrician or qualified pool installer to ensure there is adequate protection between the pump motor and mains power supply according to individual countries safety code. The pump has power cord with plug attached on the plug, plug it to a power socket with circuit breaker to isolate the motor from the mains power for over load protection. The circuit breaker rating should refer to the electrical

specification of individual pump working voltage and power.

The power has to be with a Residual Current Device (RCD) or Ground Fault Circuit Interrupt (GFCI) having a rated residual operating current not exceeding 30mA.



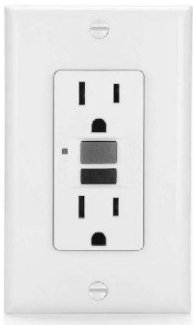
WARNING:

If the RCD / GFCI device trips, it means there is fault on the power line or motor. Do not use this pump. Disconnect the pump and have the problem corrected by a qualified service representative before using. Press the reset button to reset the RDC / GFCI devices after fixed. It will keeps the circuit shut off and will not reset if the power line problem is not fixed. It is recommend to test the RCD / GFCI at least once a month.

RCD


















NEMA GFCI Receptacle



NEMA GFCI Breaker

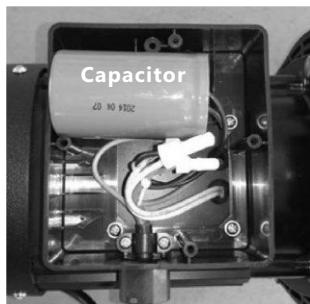


Pumps should be shipped with Power cord with plug for corresponding countries. If there is not power cord attached to the pump, it is necessary to follow the local electricity power line color code to connect the power according to the wiring for individual pump diagram.

 Australia Plug			 UK Plug			 European Plug		
200-240Vac Single Phase								
			 NEMA Plug			NEMA 230Vac 3 phase		
			115Vac Single Phase			Wire Color Code		
<p>L</p> 			<p>L</p>  Black			 L1 = Black		
<p>N</p> 			<p>N</p>  White or Silver			 L2 = Red		
<p>Ground</p>  Green / Yellow or Green			 Green / Yellow or Green			 L3 = Blue		
						 White		
						 Green / Yellow or Green		



## Wiring Diagram , 220Vac 50 & 60Hz



---

## 5. START UP

---



### **WARNING:**

1. Verify the pump shaft turn freely.
2. Check the mains voltage, current and frequency are accordingly to the name plate.
3. Never run pump dry! Running pump dry may cause damage to the mechanical seal causing leakage and flooding. Fill the pre-filter with water before starting motor.
4. Before removing the pre-filter Lid, STOP PUMP, CLOSE GATE VALVES in suction and

discharge pipes.

5. Always STOP THE PUMP before when RELEASE ALL PRESSURE from the pump and the piping system before proceeding.
6. Never tighten or loosen screw while the pump is in operation.
7. The suction pipe and the suction inlet in the pool must be free from obstruction.

### **WARNING: Tighten/untighten the pump Lid by hand only.**

**WARNING:** Before start-up, the alignment of the pump should be checked. The tubing should be inspected to ensure that they are properly fitted and tightened and that they do not exert pressure or tension on the pump's suction or discharge connection. The pump should never be operated.

1. Clear all piping of construction debris and verify that the piping has passed a proper pressure test.
2. Check the filter and other equipment for proper installation, verifying all clamps and connections are properly installed as per the manufacturer's instructions.
3. Open any shut off valves on the suction and discharge lines.
4. Open the filter pressure relief valve and release all pressure from the system.
5. If the pump is located below the water level of the pool, opening the pressure relief valve will fill the pump with water.
6. If the pump is located above the pool water level, remove the Lid from the pre-filter and fill with water before starting the pump.
7. Check to see that the Lid O-ring and seat areas are clean and lubricated. Debris in the sealing area can cause air to leak into the system and make it difficult to prime the pump.
8. Close/tighten the Lid to make an airtight seal.
9. Turn on power wait for pump to prime. Pump priming time for 3m (10ft) should be at least 4.5 minutes. Priming will depend on vertical length of suction lift and horizontal length of suction pipe. If pump does not prime within prime time, stop the motor and determine cause.
10. If the pump does not prime within 10 minutes. Ensure all instructions to this point have been followed. Stop the pump! Check for suction leaks and repeat steps (I) through (VIII).

---

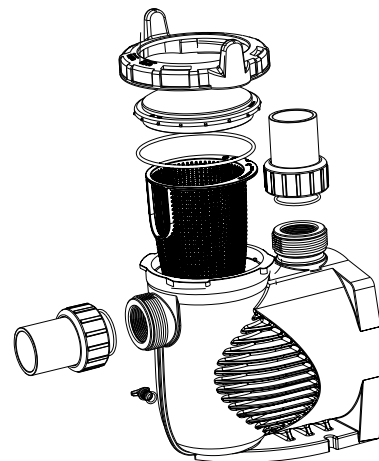
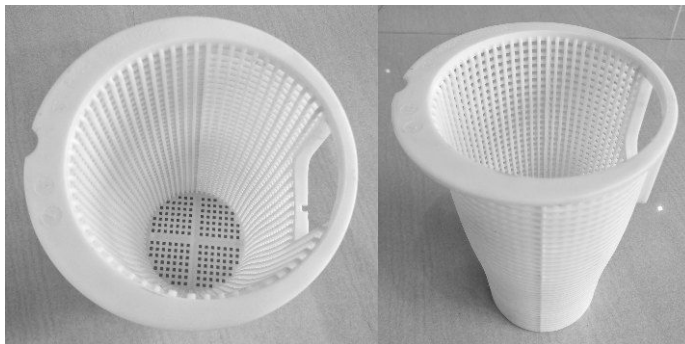
## 6. ROUTINE MAINTENANCE

---

The pump mechanical seal requires no lubrication and service.

The only routine maintenance needed is the inspection and cleaning of the pre-filter basket. Debris or trash collected in the basket will choke off the water flow through the pump. Follow the instructions below in order to clean the pre-filter basket:

1. Turn off the pump, close the gate valve in suction and discharge, and release all pressure from the system before proceeding.
2. Lose the suction inlet hose or piping.
3. Turn the transparent Lid nut anti clockwise to release by hand and lift the transparent Lid up.
4. Remove the pre-filter basket and cleaning. Make sure all the holes in the basket are clear, flush the basket with water. Put back the basket with the guideline on the edge of the basket. If the basket is placed not properly, the transparent Lid and Lid nut will not fit well and air leakage should occur.
5. Clean and inspect the Lid's O-ring ring; rein stall on the transparent Lid.
6. Clean the ring groove on the pre-filterbody and replace the Lid. To help keep the Lid from sticking, tight enit by hand only.
7. Connect back the suction hose or pipe. Water should flood the pump body and restart the pump.



---

## 7. WINTERIZING

---

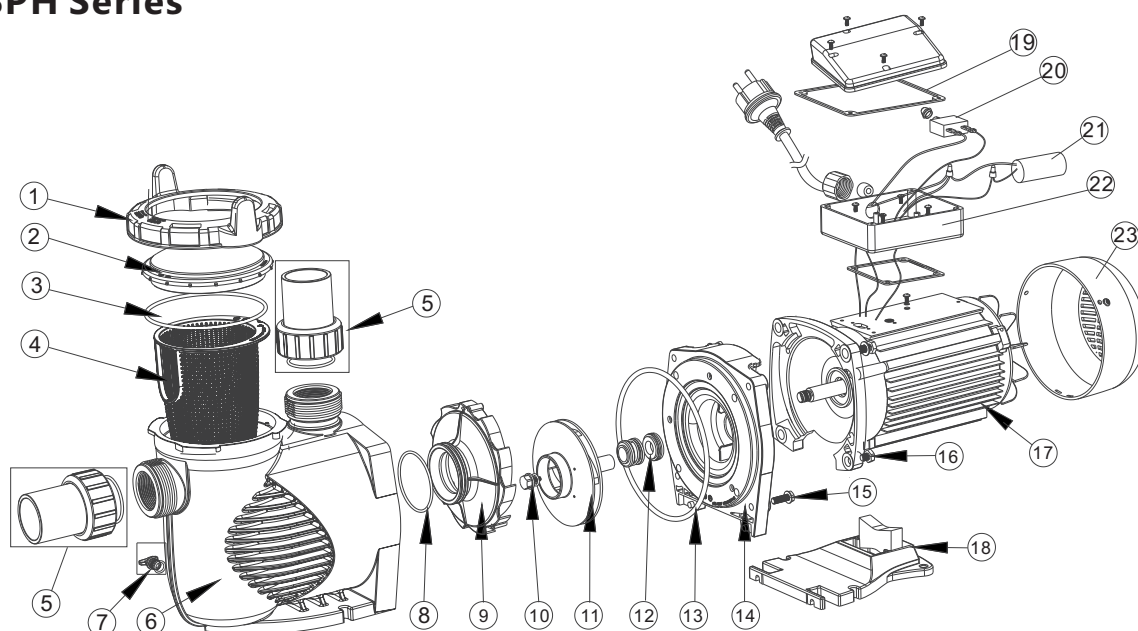
If the air temperature drops below 0°C (35°F), the water in the system can freeze and cause damage. Freezing damage is not warrantable.

To prevent freezing damage follow the procedures listed below:

1. Shut off electrical power for the pump at the house circuit breaker.
2. Drain the water out of the pump case by removing the two drain plugs from the case.
3. Store the plugs in the pump basket.
4. Cover the motor to protect it from severe rain, snow and ice.
5. If it is possible, store the pump in a dry location during this time.
6. Do not wrap the motor in plastic. It will cause condensation and rust on the inside of the motor.

## 8. REPLACEMENT PARTS

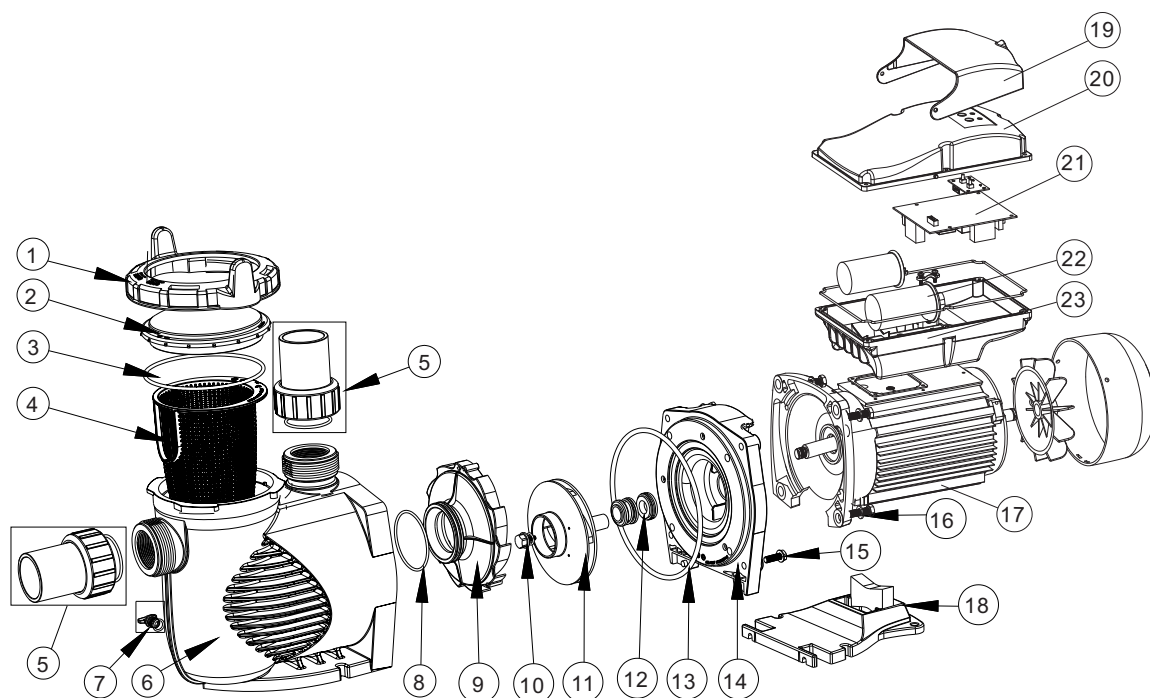
### 8.1 SPH Series



Key No.	Part No.	Description	QTY
1	01021143	Nut for lid	1
2	01041057	Transparent Lid	1
3	02010253	O-Ring for Lid	1
4	01112080	Basket	1
5	89023801	1.5"Union	2
6	01021144	Pump body	1
7	89021307	Drain Plug With O-ring	2
8	02010245	O-Ring For Diffuser	1
9	01112081	Diffuser	1
10	89020719	Screw for impeller with O-ring	1
11	01311057	Impeller For SPH075 (50Hz)	1
11	01311047	Impeller For SPH100 (50Hz)	1
11	01400103	Impeller For SPH150 (50Hz)	1
11	01400100	Impeller For SPH200 (50Hz)	1
11	01400101	Impeller For SPH300 (50Hz)	1
11	01311059	Impeller For SPH075 (60Hz)	1
11	01311057	Impeller For SPH100 (60Hz)	1
11	01311058	Impeller For SPH150 (60Hz)	1
11	01311047	Impeller For SPH200 (60Hz)	1
11	01400103	Impeller For SPH300 (60Hz)	1
12	113005935	3/4" Mechanical seal (EPH/EPV/SPH/SPV)	1
13	02010246	O-Ring for Flange	1

Key No.	Part No.	Description	QTY
14	01021145	Flange	1
15	89020720	M8*35 Screw with Washer For Motor	4
16	03011075	M8*30 Screw	4
17	04020116	Motor YYD-8022E For SPH075	1
17	04020117	Motor YYD-8032E For SPH100	1
17	04020118	Motor YYD-8042E For SPH150	1
17	04020119	Motor YYD-8052E For SPH200	1
17	04020120	Motor YYD-8062E For SPH300	1
18	01112082	Base	1
18	02010211	Arch Cushion for Base	1
19	02011073	Arch Cushion for Cable Box	1
20	04015015	Overload Switch PE77-8A/250VAC for SPH150	1
20	04015012	Overload Switch PE77-10A/250VAC for SPH200	1
20	04016037	Overload Switch PE77-13A/250VAC for SPH300	1
21	04016012	Capacitor for SS/SD/SQ/SP/ST100-120 & SC075 & SPH075Pump	1
21	04016014	Capacitor for SB/SR10,SB15 & SC100-150 & SPH100-150 Pump	1
21	04016015	Capacitor for SB/SR20 & SC/EPH200 & SPH200 Pump	1
21	04016016	Capacitor for SB/SR30 EPH300,EPH400 & SPH300 Pump	1
22	89022112	Cable Box	1
23	01321031	Fan Cover	1

## 8.2 SPH-II Series



Key No.	Part No.	Description	QTY
1	01021143	Nut for lid	1
2	01041057	Transparent Lid	1
3	02010253	O-Ring for Lid	1
4	01112080	Basket	1
5	89023801	1.5"Union	2
6	01021144	Pump body	1
7	89021307	Drain Plug With O-ring	2
8	02010245	O-Ring For Diffuser	1
9	01112081	Diffuser	1
10	89020719	Screw for impeller with O-ring	1
11	01311057	Impeller For SPH075 (50Hz)	1
11	01311047	Impeller For SPH100 (50Hz)	1
11	01400103	Impeller For SPH150 (50Hz)	1
11	01400100	Impeller For SPH200 (50Hz)	1
11	01400101	Impeller For SPH300 (50Hz)	1
11	01311059	Impeller For SPH075 (60Hz)	1
11	01311057	Impeller For SPH100 (60Hz)	1
11	01311058	Impeller For SPH150 (60Hz)	1
11	01311047	Impeller For SPH200 (60Hz)	1
11	01400103	Impeller For SPH300 (60Hz)	1
12	113005935	3/4"Mechanical seal (EPH/EPV/SPH/SPV)	1
13	02010246	O-Ring for Flange	1
14	01021145	Flange	1
15	89020720	M8*35 Screw with Washer For Motor	4
16	03011075	M8*30 Screw	4
17	104005869	Motor YYD-8032TE for SPH100-II	1
17	1040070057	Motor YYD-8042TE for SPH150-II	1
18	01112082	Base	1
19	4202870009	Transparent Cover for box	1
20	4202870008	Wire box top cover	1
21	106255867	Operation PCB	1
21	106255868	Main PCB	1
22	106241431	Capacitor 16 uF for SPH100-II /SPH150-II	1
22	106245866	Capacitor 30uF for SPH100-II /SPH150-II	1
23	4202770008	Wire box bottom cover	1

## 9. TROUBLE SHOOTING

Problem description	Possible causes
Motor does not start	<ol style="list-style-type: none"><li>1. Disconnect switch or circuit breaker in off position</li><li>2. Fuses blow nor thermal over load open</li><li>3. Locked motor shaft</li><li>4. Motor windings burned out</li><li>5. Defective starting switch inside single phase motor</li><li>6. Disconnected or defective wiring</li><li>7. Low voltage</li></ol>
Pump does not reach full speed	<ol style="list-style-type: none"><li>1. Low voltage</li><li>2. Pump connected to the wrong voltage</li></ol>
Motor over heats (protect or trips)	<ol style="list-style-type: none"><li>1. Low voltage</li><li>2. Motor windings connected to the wrong voltage on dual voltage model</li></ol>
Pump delivers no water	<ol style="list-style-type: none"><li>1. Pump is not primed</li><li>2. Closed valve in suction or discharge line</li><li>3. Leakage or air into suction system</li><li>4. Impeller clogged</li></ol>
Leakage of water at the shaft	Shaft seal requires replacement
Low pump capacity	<ol style="list-style-type: none"><li>1. Valve in the suction or discharge line partly closed</li><li>2. Suction or discharge line partly plugged</li><li>3. Suction or discharge line too small</li><li>4. Plugged basket in skimmer or hair and lint strainer</li><li>5. Dirty filter</li><li>6. Impeller clogged</li></ol>
High pump pressure	<ol style="list-style-type: none"><li>1. Discharge valve or inlet fittings closed too much</li><li>2. Return lines too small</li><li>3. Dirty filters</li></ol>
Noisy pump and motor	<ol style="list-style-type: none"><li>1. Plugged basket in skimmer or hair in lint strainer</li><li>2. Worn motor bearings</li><li>3. Valve in suction line partly closed</li><li>4. Suction line partly plugged</li><li>5. Vacuum hose plugged or too small</li><li>6. Pump not supported properly</li></ol>
Air bubbles at inlet fittings	<ol style="list-style-type: none"><li>1. Leakage of air into the suction line in connections or valve stem</li><li>2. Cover gasket of hair and lint strainer needs cleaning</li><li>3. Low water level in the pool</li></ol>

Note: If the above recommendations of this manual do not solve your particular problem(s), please contact your local service agent for further assistance.

---

## 10. TERMS OF THE WARRANTY

---

As original purchaser of this equipment have purchased from Emaux Water Technology Co Ltd, through Authorized International Distributor or Dealer, warrants its products free from defects in materials and workmanship under normal use during warranty period. The warranty period begins on the day of purchase and extends only to the original purchaser. It is not transferable to anyone who subsequently purchases the product from you. It excludes all expendable parts.

During the warranty period, Emaux authorized reseller will repair or replace defective parts with new parts or, at the option of Emaux, serviceable used parts that are equivalent or superior to new parts in performance.

This Limited Warranty extends only to products purchased from Emaux authorized reseller. This Limited Warranty does not extend to any product that has been damaged or rendered defective

- (a) as a result of accident, misuse or abuse;
- (b) as a result of an act of God;
- (c) by operation outside the usage parameters stated herein;
- (d) by the use of parts not manufactured or sold by Emaux;
- (e) by modification of the product;
- (f) as a result of war or terrorist attack; or
- (g) as a result of service by anyone other than Emaux authorized reseller or authorized agent.

EXCEPT AS EXPRESSLY SET FORTH IN THIS WARRANTY, EMAUX MAKES NO OTHER WARRANTIES EXPRESSED OR IMPLIED, INCLUDING ANY IMPLIED WARRANTIES OR MERCHANTABILITY AND FITNESS FOR A PARTICULAR PURPOSE. EMAUX EXPRESSLY DISCLAIMS ALL WARRANTIES NOT STATED IN THIS LIMITED WARRANTY. ANY IMPLIED WARRANTIES THAT MAY BE IMPOSED BY LAW ARE LIMITED TO THE TERMS OF THIS EXPRESS LIMITED WARRANTY.

## **EMAUX WATER TECHNOLOGY CO., LTD**

**ADDRESS FLAT A-D, 20/F., KAI BO 22, 22 WING KIN ROAD,  
KWAI CHUNG, HONG KONG**

**PHONE +852 2832 9880**

 **STRIVE FOR CLEAR WATER**

**[www.emauxgroup.com](http://www.emauxgroup.com)**